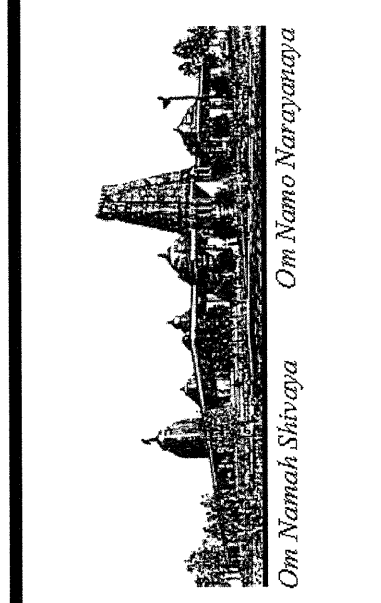


REVISIONS	BY
△ 05-24-10	HCCC
△ 08-06-10	BPC
△ 11-01-10	BPC

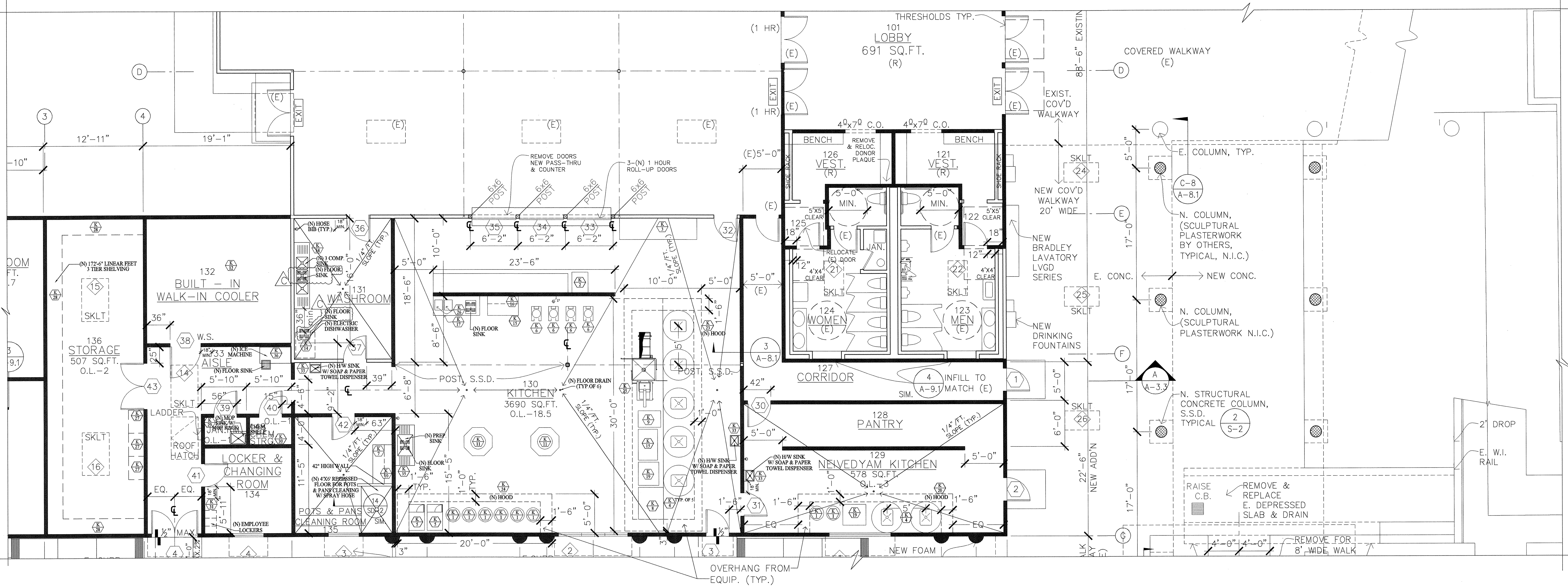


ADDITION TO EXISTING BUILDING "B"
HINDU COMMUNITY and CULTURAL CENTER
 1232 ARROWHEAD AVE. LIVERMORE, CA 94551

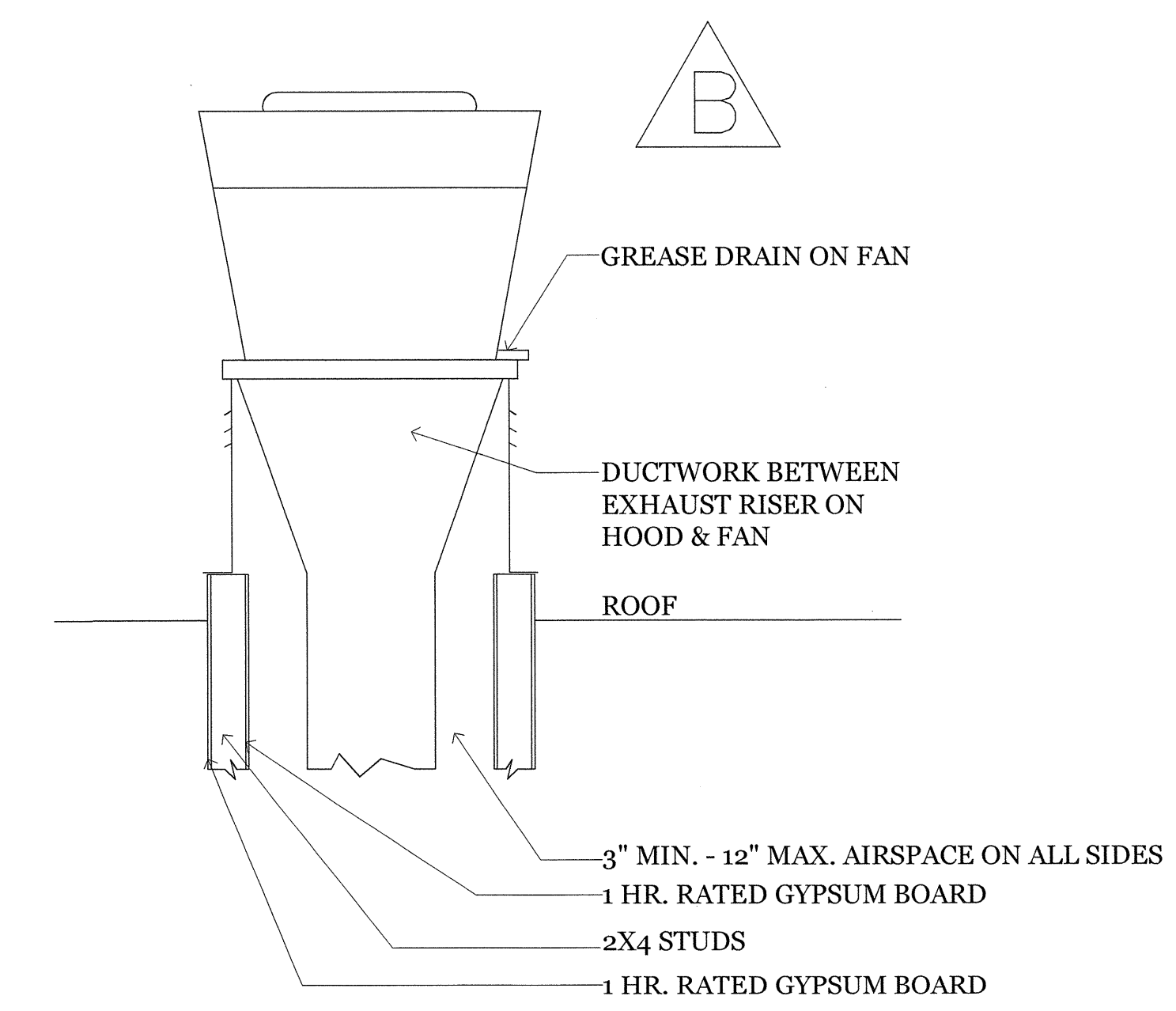
PHASE 1-A
 ADDITIONS TO BUILDING "B"
 PROPOSED KITCHEN LAYOUT

DATE	03/12/10
SCALE:	1/8"=1'-0"
DRAWN BY:	RL
PROJECT:	ARROWHEAD

K-1



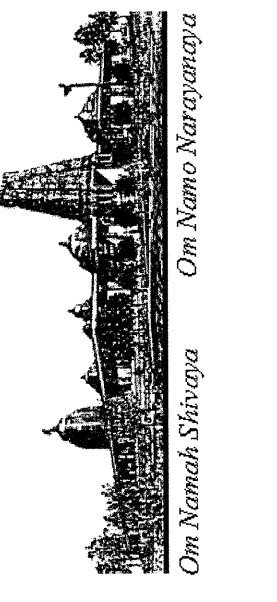
- NOTES:**
1. PROVIDE CASTERS FOR GRIDDLE K-8, FRYER K-9 & OPEN BURNER RANGE K-19.
 2. VAPOR HOOD NOT REQUIRED FOR AUTO DISHWASHER.
 3. INSTALL ALL FLOOR SINKS FLUSH WITH FINISHED FLOOR SURFACE AND 1/2" EXPOSED WHEN LOCATED UNDER EQUIPMENT WITH 12" OR LESS, LEGS OR BASE.
 4. ALL EQUIPMENTS - NSF APPROVED, OWNER FURNISHED, CONTRACTOR INSTALLED.
 5. ODOR CONTROL EQUIPMENT UNIT SPECS. SUBMITTED FOR CITY APPROVAL.
 6. ALL PLUMBING & ELECTRICAL LINES SHALL BE CONCEALED WITHIN THE BUILDING STRUCTURE (NO EXPOSED J BOXES, CONDUIT, VENT PIPES, WATER LINES ETC.)
 7. PROVIDE APPROVED QUICK DISCONNECT GAS LINE FOR COOKING EQUIPMENTS.
 8. EQUIPMENT SHALL MEET NSF STANDARDS.
#2 CUSTOM STAINLESS STEEL FABRICATION.



* HOOD SIZES - AS PER HOOD MANUFACTURER'S SHOP DRAWINGS.

**1-HR. FIRE RESISTIVE PROTECTION
AS PER CMC SECTION 508**

REVISIONS	BY
△ 05-24-10	HCCC
△ 08-06-10	BPC
△ 11-01-10	BPC



ADDITION TO EXISTING BUILDING "B"
HINDU COMMUNITY and CULTURAL CENTER
 1232 ARROWHEAD AVE. LIVERMORE, CA 94551

KITCHEN
 EQUIPMENT SCHEDULE
 PHASE 1A

DATE: 03/12/10
 SCALE: AS NOTED
 DRAWN BY: RL/ssm
 PROJECT: ARROWHEAD

K-2

MARK NO.	DESCRIPTION	MANUFACTURER	MODEL NO.	PLUMBING						DIMENSIONS			ELECTRICAL				WEIGHT LBS	ELECTRICAL COMMENTS AND NOTES	
				DOM.COLD WATER		HOT WATER		WASTE	NAT. GAS		LENGTH	DEPTH	HEIGHT	VOLTS	PH.	AMPS			POWER
				GPM	CONN.SIZE	GPM	CONN.SIZE	CONN.SIZE	BTUH	CONN.SIZE									
K-1	RICE COOKER	TOWN FOOD SERVICE EQUIP. CO.	RM-55N-R	-	-	-	-	-	34,700	3/4"NPTM	22" DIA	-	17"	-	-	-	-	50	-
K-2	PROOF/HOT CABINET	CRES COR	121-PH-UA-11D	-	-	-	-	-	-	-	24-1/4"	32"	69-3/4"	120	1	16	1920 WATTS	160	-
K-3	REFRIGERATOR/WORK TABLE	TRUEFOOD SERVICE EQUIP. CO.	TWT-119	-	-	-	-	-	-	-	119-1/4"	32-3/8"	33-3/8"	115	1	12	1/2 HP	660	NEMA 5-15P PLUG
K-4	STOCK POT STOVES	VULCAN-HART CO.	VSP-100	-	-	-	-	-	110,000	3/4"NPTM	18"	24 1/2"	22 1/2"	-	-	-	-	50	-
K-5	STEAMER	ACCUTEMP	STEAM'N'HOLD MOD. D	-	-	-	-	-	-	-	22" DIA	-	17"	208	3	23	-	50	L15-30 NEMA RECEPTACLE
K-6	PLANETARY MIXER	BERKEL	PM20	-	-	-	-	-	-	-	15"	22"	32"	115	1	8.5	3/4 HP	225	-
K-7	SORTING TABLE	ADVANCE TABCO	SR-60	-	-	-	-	-	-	-	60"	30"	37 1/2"	-	-	-	-	-	HEIGHT W/O CASTERS
K-8	GAS GRILL	ANETS	SG 30X48	-	-	-	-	-	160,000	3/4"NPTM	48 1/4"	37 3/4"	15 1/4"	-	-	-	-	50	PROVIDE CASTERS
K-9	FRYER	PITCO	FBG24	-	-	-	-	-	120,000	3/4"NPTM	22" DIA	-	17"	115	1	0.7	-	315	PROVIDE CASTERS
K-10	POT RACKS	ADVANCE TABCO	SW-60	-	-	-	-	-	-	-	60"	12"	-	-	-	-	-	-	-
K-11	RICE MIXER	BIOME LIMITED	MCR-UNC	-	-	-	-	-	-	-	810MM	615MM	1120MM	220-240	1	-	130 W	100KG	TO BE CONFIRMED PRIOR TO WIRING
K-12	NOT USED	-	-	-	-	-	-	-	-	-	-	-	-	-	-	-	-	-	-
K-13	NOT USED	-	-	-	-	-	-	-	-	-	-	-	-	-	-	-	-	-	-
K-14	DISH WASHER	HOBART	AM 15 ELECTRIC	-	-	-	-	-	-	-	29 1/4"	37 1/2"	66 1/2"	208	3	40	-	-	TO BE CONFIRMED PRIOR TO WIRING
K-15	WORK TABLE	ADVANCE TABCO	KMS 304	-	-	-	-	-	-	-	48"	30"	35 1/2"	-	-	-	-	-	-
K-16	SPICE RACK SHELF	ADVANCE TABCO	WS-12-48	-	-	-	-	-	-	-	48"	12"	-	-	-	-	-	-	-
K-17	IDLI WORK TABLE W/SINK	ADVANCE TABCO	KMS-11B-306R	-	-	-	-	-	-	-	72"	30"	35 1/2"	-	-	-	-	-	-
K-18	NOT USED	-	-	-	-	-	-	-	-	-	-	-	-	-	-	-	-	-	-
K-19	OVEN RANGE	ROYAL	RR-6	-	-	-	-	-	215,000	3/4"NPTM	36"	31 1/2"	36"	-	-	-	-	-	PROVIDE CASTERS
K-20	HOOD-CLASS I *	GREENHECK	GHEW	-	-	-	-	-	-	-	20'-0"	5'-0"	-	-	-	-	-	-	W/ FIRE SUPPRESSION SYSTEM
K-21	NOT USED	-	-	-	-	-	-	-	-	-	-	-	-	-	-	-	-	-	-
K-22	NOT USED	-	-	-	-	-	-	-	-	-	-	-	-	-	-	-	-	-	-
K-23	HOOD-CLASS I *	CAPTIVEAIRE	NDI SERIES	-	-	-	-	-	-	-	30'-0"	10'-0"	-	-	-	-	-	-	W/ FIRE SUPPRESSION SYSTEM & ODOR CONTROL UNIT
K-24	HOOD-CLASS I *	GREENHECK	GHEW	-	-	-	-	-	-	-	20'-0"	5'-0"	-	-	-	-	-	-	W/ FIRE SUPPRESSION SYSTEM
K-25	FLOUR TORTILLA MACHINE	BE&SCO	OVEN MODEL 20 WEDGE PRESS MOD. 12	-	-	-	-	-	65,000	-	-	-	-	208	1	24	-	-	-
K-26	IDLY DOUGH DISPENSER	EDHARD	MKS	-	-	-	-	-	-	-	15.4"	9"	9.5"	120	-	-	0.125/93	-	60 HZ.
K-27	DUNNAGE RACKS	GLOBAL	561959AB	-	-	-	-	-	-	-	36"	24"	12"	-	-	-	-	-	-
K-28	STORAGE SHELVING	EAGLE	2460S / 2472S	-	-	-	-	-	-	-	60"/72"	24"	-	-	-	-	-	-	-
K-29	MOP SINK W/MOP RACK	ADVANCE TABCO	9-OP-40	-	-	-	-	-	-	-	25"	21"	16"	-	-	-	-	-	-
K-30	CHEMICAL SHELVES	SchoIAR	949 V 9902	-	-	-	-	-	-	-	36"	16"	48"	-	-	-	-	-	-
K-31	EMPLOYEE LOCKERS	RAND	W-CN811DA33	-	-	-	-	-	-	-	12"	18"	36"	-	-	-	-	-	-
K-32	HEATING OVEN	WOLF	DO30U/S	-	-	-	-	-	-	-	28 3/16"	24"	50"	-	-	-	-	-	-
K-33	HAND SINK	COLDTECH	SSH-14	-	-	-	-	-	-	-	17"	16"	12"	-	-	-	-	-	-
K-34	3 COMPARTMENT SINK	COLDTECH	SS3-1824	-	-	-	-	-	-	-	102"	24"	45"	-	-	-	-	-	-
K-35	SCULLERY PREP SINK	ELKAY	RNSF8124LR	-	-	-	-	-	-	-	63"	29 3/4"	36"	-	-	-	-	-	-
K-36	ICE CUBE MACHINE	MANITOWOC	SD-1402A	-	-	-	-	-	-	-	48"	24 1/2"	26 1/2"	-	-	-	-	-	-
K-37	WATER HEATER	A.O.SMITH	BTH-300A	-	-	-	-	-	-	-	-	-	-	-	-	-	-	-	FOR LOCATION REFER TO P-1 130 GALLONS, 300000 BTUH

INDIRECT VIA FLOORSINK

INDIRECT VIA FLOORSINK

INDIRECT VIA FLOORSINK

1. PROVIDE WITH PREMIUM EFFICIENCY FAN MOTORS.
2. PRE-PURCHASED
3. SPRING TYPE VIBRATION ISOLATORS. 2" THICK 30% PLEATED FILTERS.

* A stainless Steel enclosure panel will be installed for each hood, from top of hood to the ceiling.