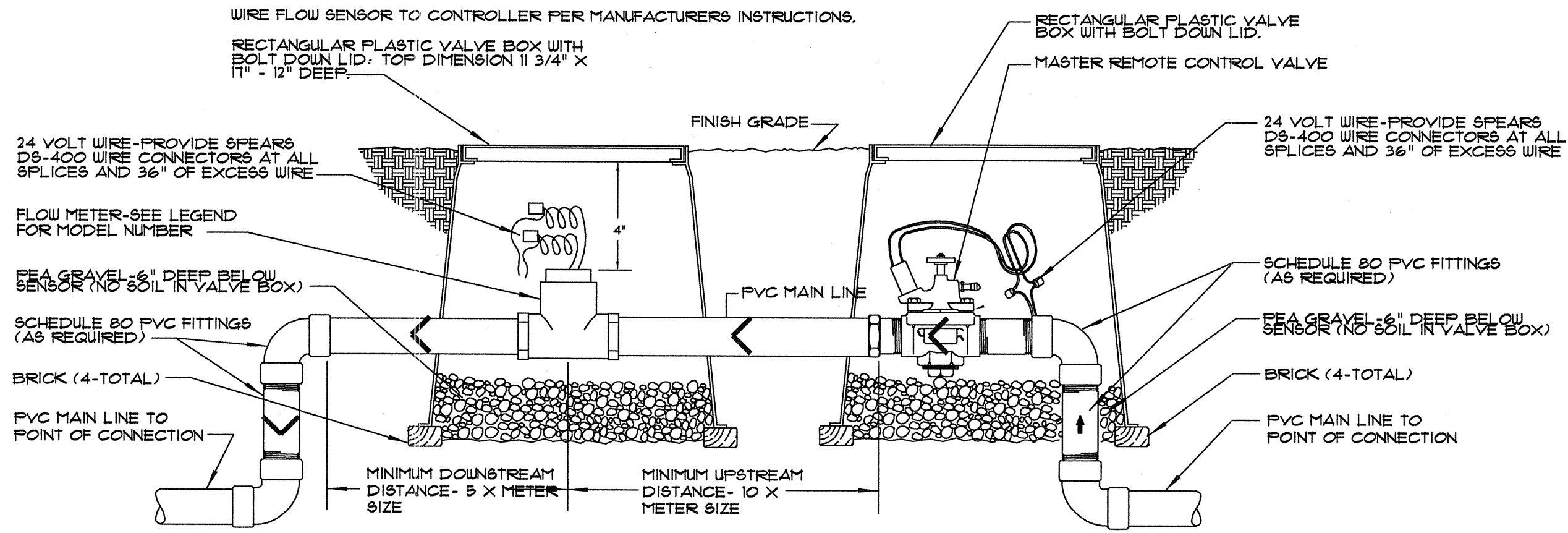
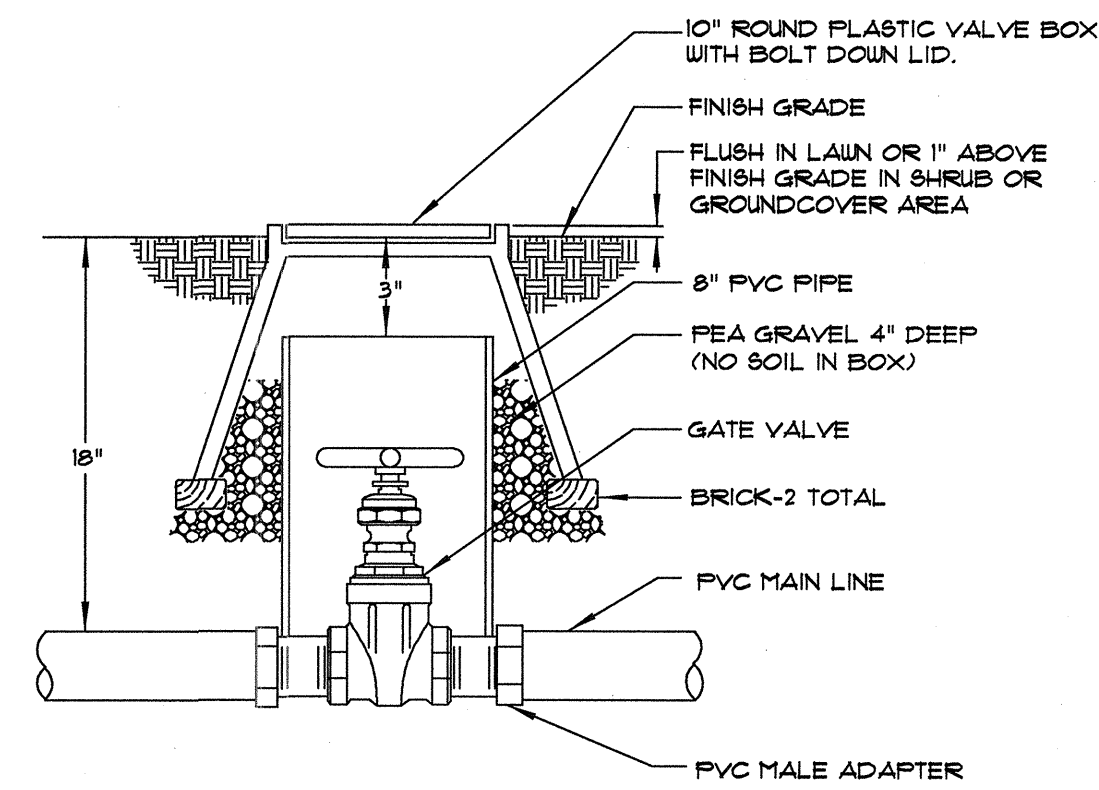


- Rain Master series controller panel mounted flush on face of enclosure at 25 degree angle for easy access and viewing.
- Piston connected to flip top.
- Strong Box stainless steel controller enclosure model 8B-1688.
- Strong Box Controller Subassembly.
- GFI outlet and switch.
- Schedule 40 gray PVC electrical conduits with sweep ell for low voltage wire and communication cable.
- 1/2 AWG grounding wire.
- Finish grade.
- 120 volt electrical service per local codes.
- 5/8" x 8" long copper clad grounding rod (inside enclosure).
- 4" thick concrete slab over 4" compacted aggregate base. Extend 6" beyond all sides of enclosure.
- Steel template with mounting bolts attached (included with enclosure) set in concrete base.
- Radio Antenna (where specified).

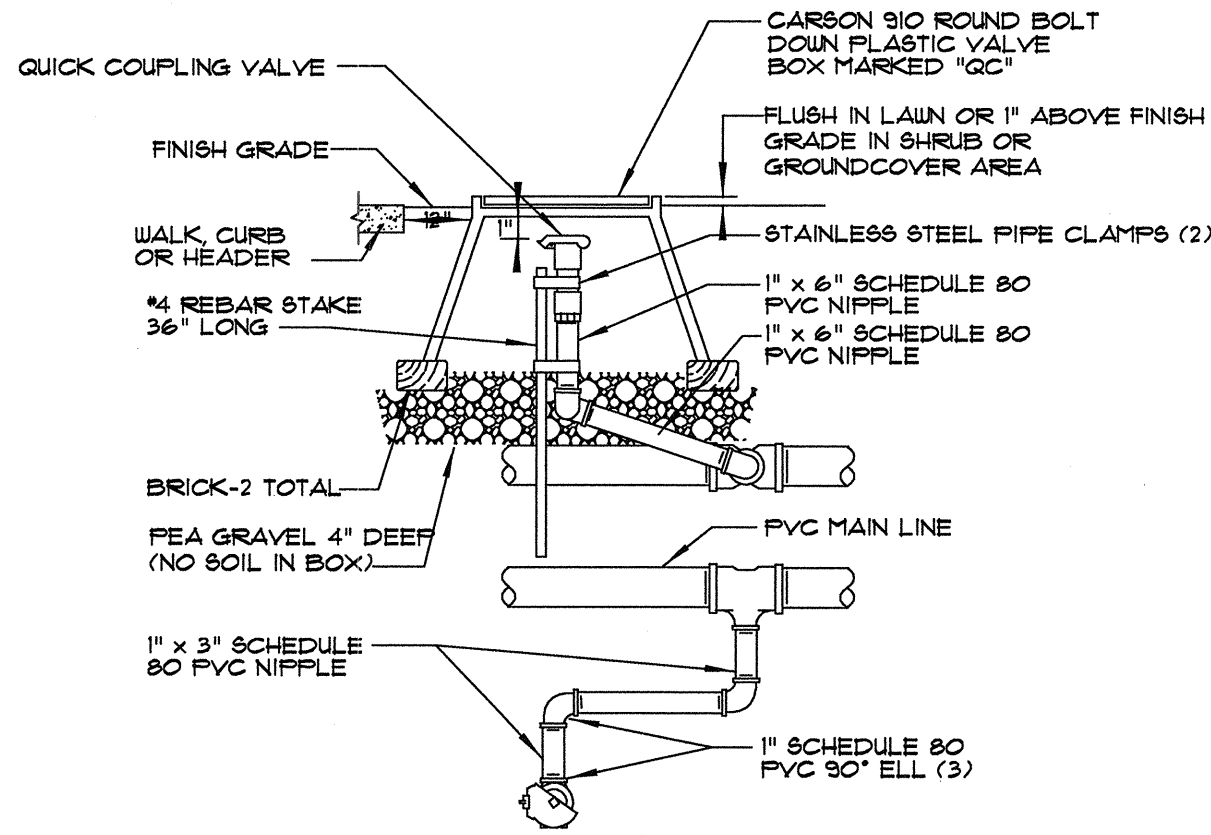
1 PEDESTAL MOUNT CONTROLLER  
NTS



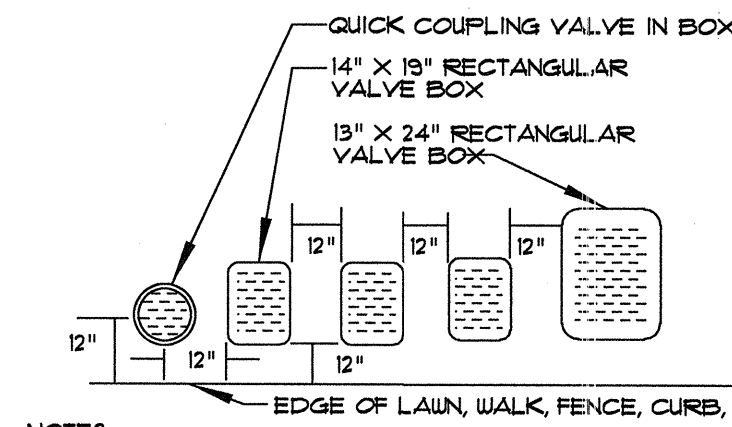
2 FLOW SENSOR AND MASTER REMOTE CONTROL VALVE INSTALLATION  
NTS



3 GATE VALVE INSTALLATION  
NTS

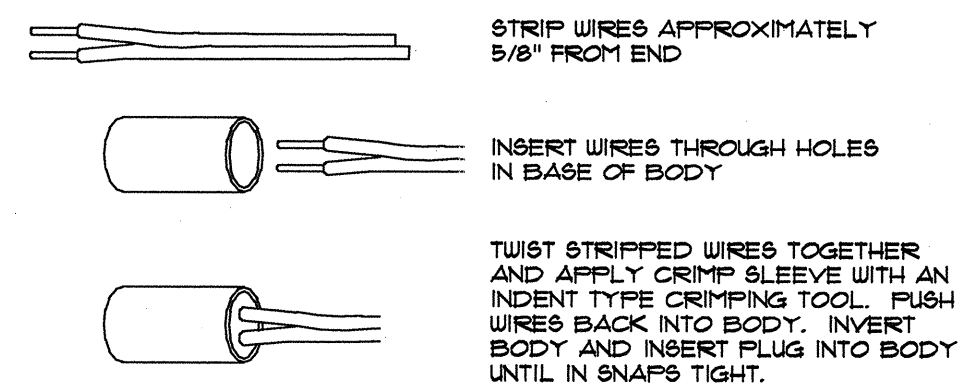


4 1" QUICK COUPLER IN BOX  
NTS



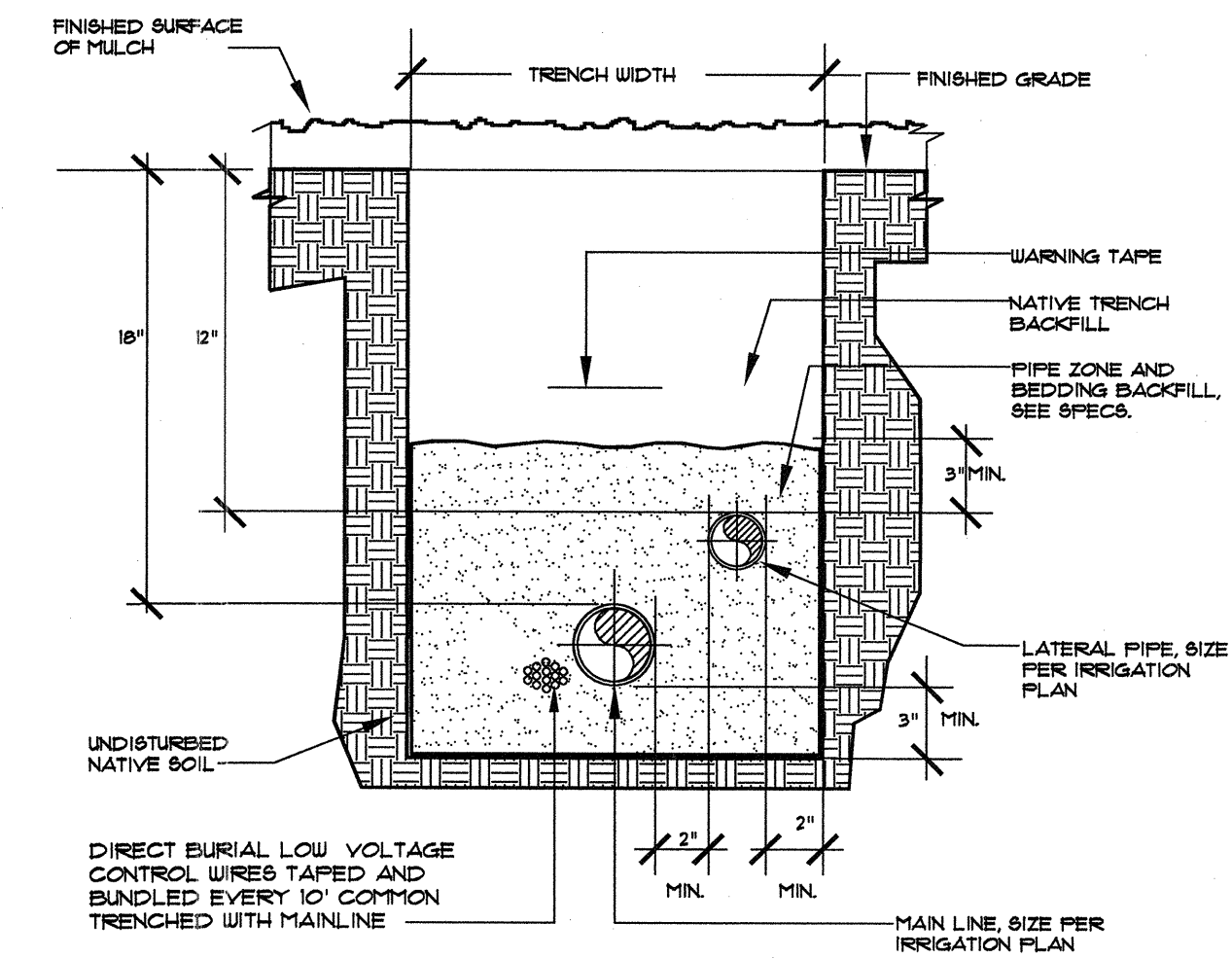
- NOTES:
- CENTER BOX OVER REMOTE CONTROL VALVE TO FACILITATE SERVICING VALVE.
  - SET BOXES 1" ABOVE FINISH GRADE IN GROUND COVER/SHRUB AREA AND FLUSH WITH FINISH GRADE IN TURF AREA.
  - SET RCV AND VALVE BOX ASSEMBLY IN GROUND COVER/SHRUB AREA WHERE POSSIBLE. INSTALL IN LAWN AREA ONLY IF GROUND COVER DOES NOT EXIST ADJACENT TO LAWN.
  - SET BOXES PARALLEL TO EACH OTHER AND PERPENDICULAR TO EDGE.
  - AVOID HEAVILY COMPACTING SOIL AROUND VALVE BOX EDGES TO PREVENT COLLAPSE AND DEFORMATION OF VALVE BOX SIDES.
  - ALL VALVE BOXES SHALL HAVE BOLT DOWN LIDS.
  - VALVE LID SHALL BE PERMANENTLY INSCRIBED "CONTROL VALVE" AND WITH THE CONTROLLER STATION NUMBER.

5 VALVE BOX INSTALLATION  
NTS

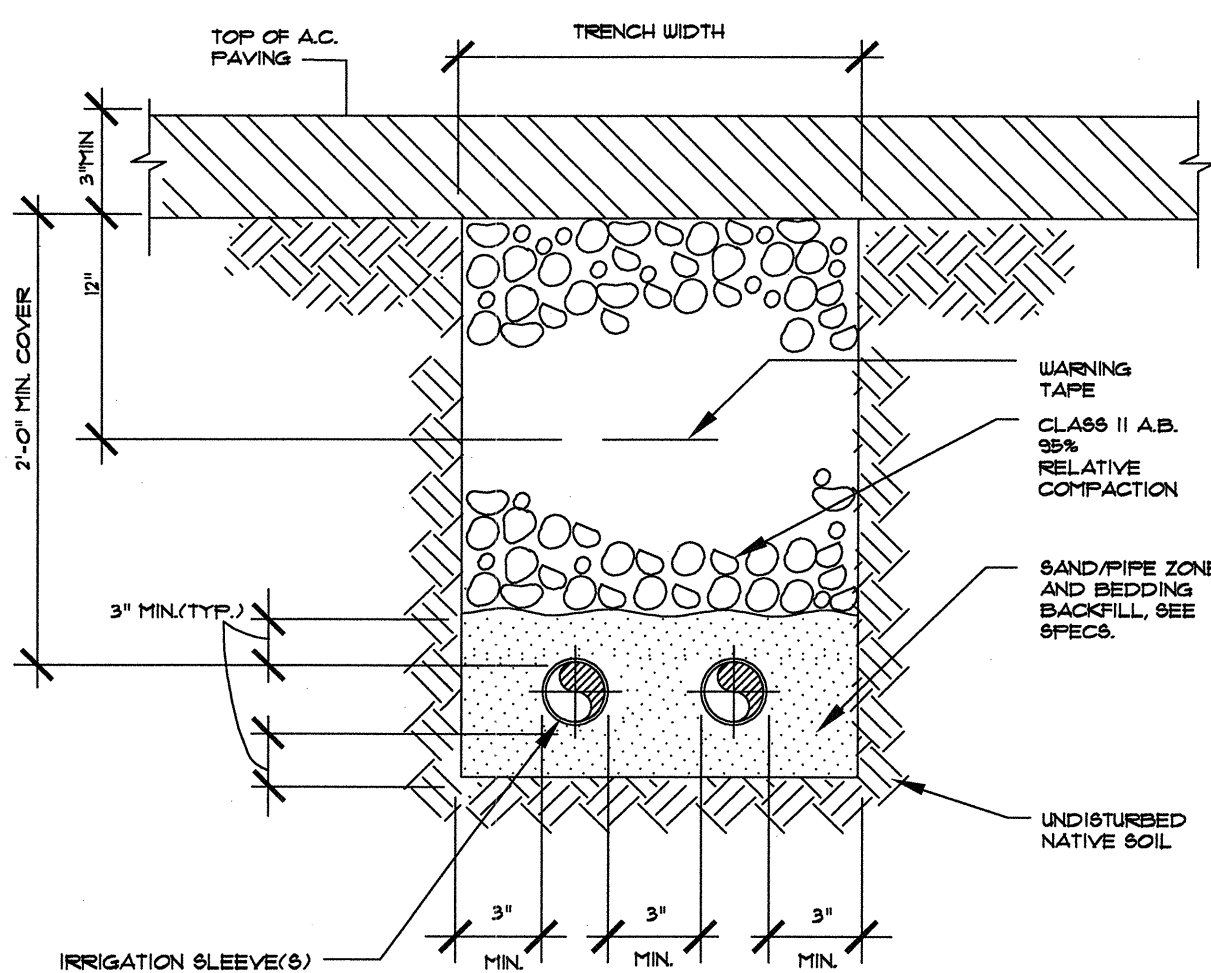


- NOTES:
- ONE CONNECTOR HANDLES #10 AWG, #12 AWG AND #14 AWG WIRES.
  - WIRE CONNECTORS WILL ACCEPT THREE WIRE OR TWO WIRE CONNECTIONS.
  - MANUFACTURED BY SPEARS #D8-500, KING #6135 OR EQUAL.

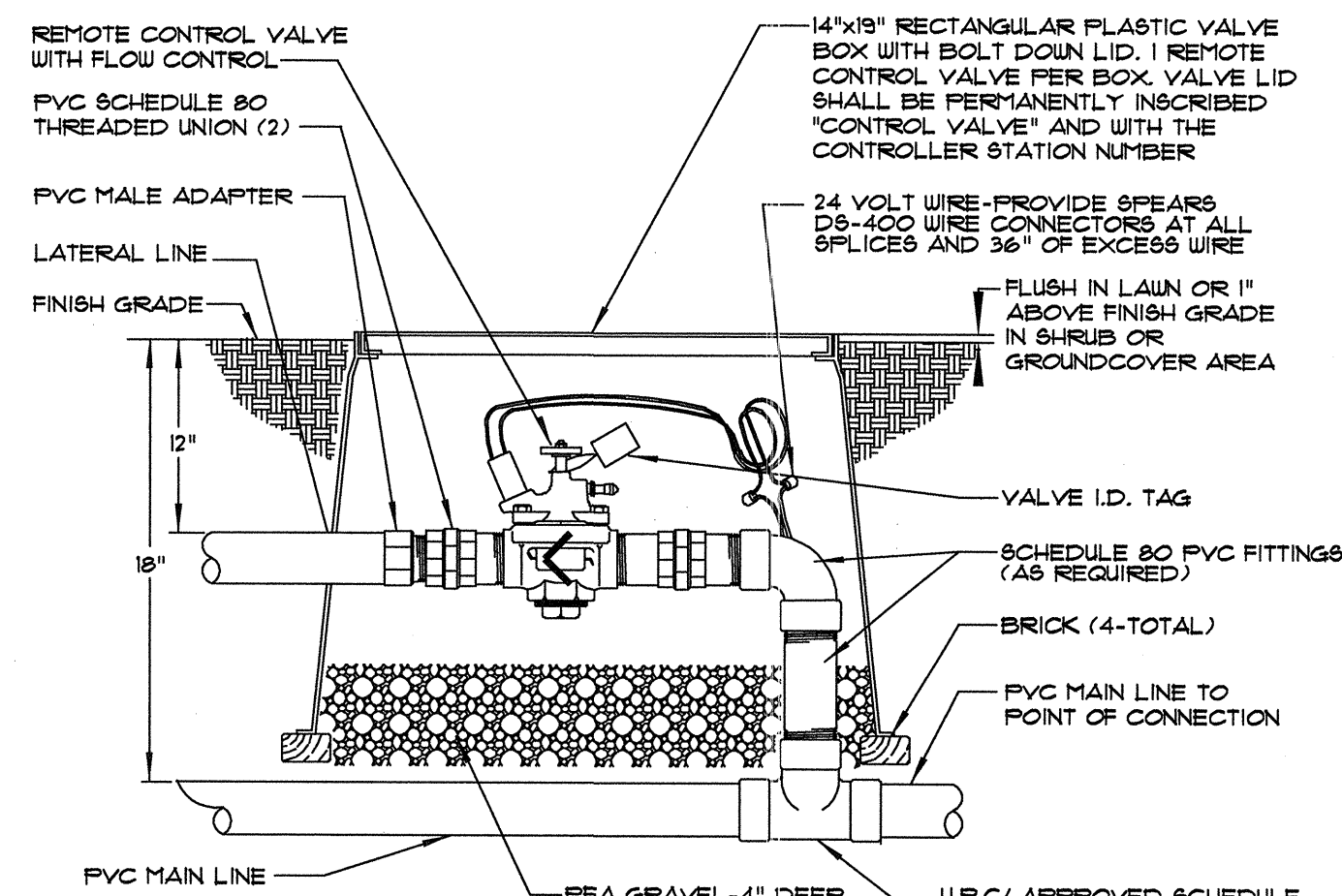
6 WIRE CONNECTION  
NTS



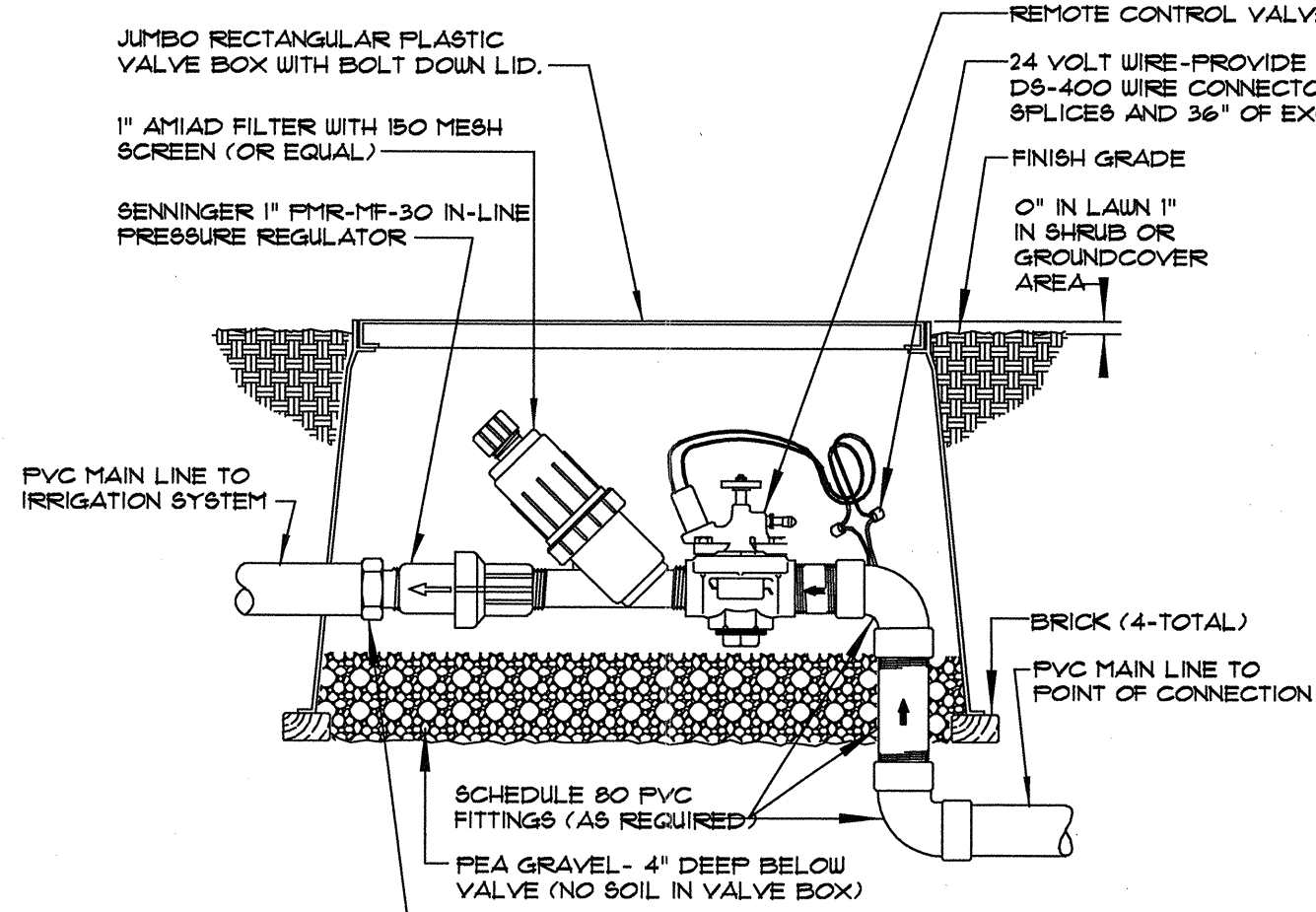
7 TYPICAL COMBINATION TRENCH  
NTS



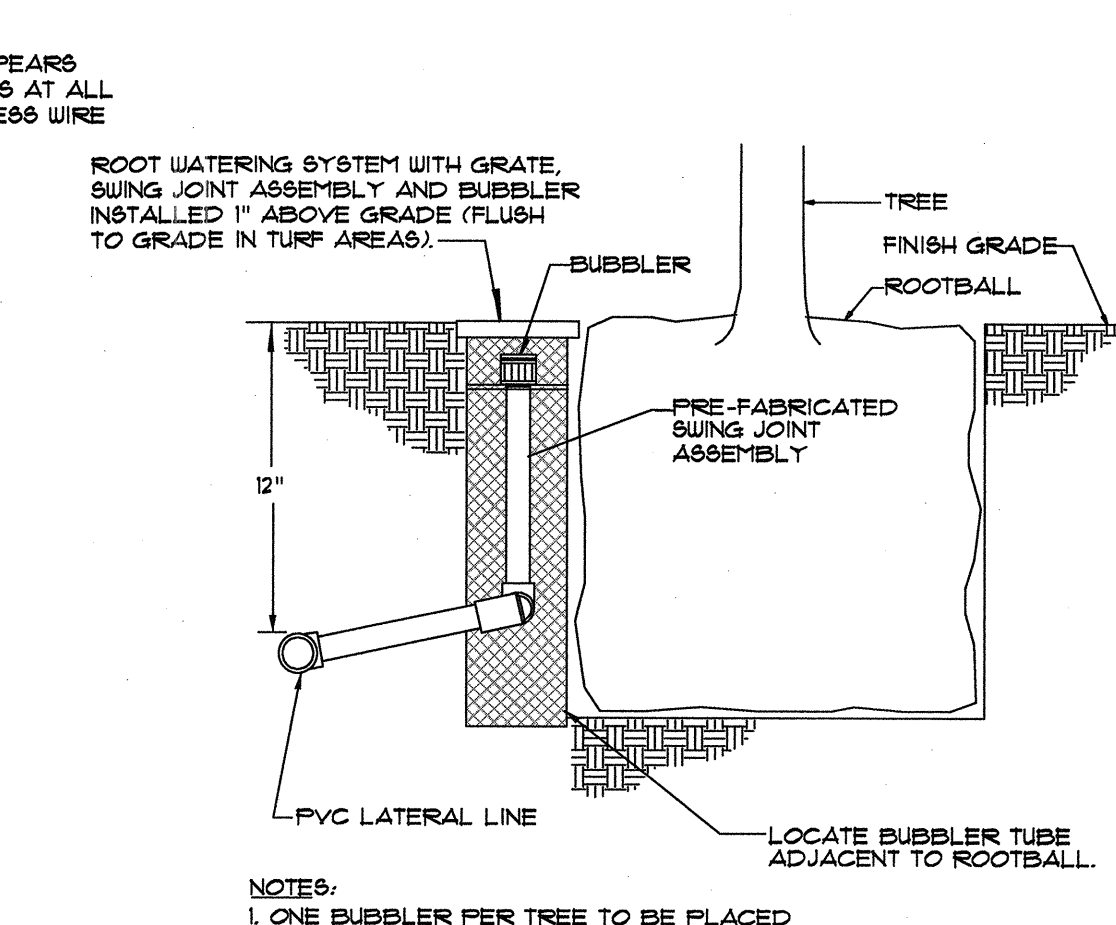
8 SLEEVE TRENCH DETAIL UNDER ROADWAY  
NTS



9 REMOTE CONTROL VALVE INSTALLATION  
NTS



10 DRIP REMOTE CONTROL VALVE ASSEMBLY  
NTS



11 TREE BUBBLER INSTALLATION  
NTS

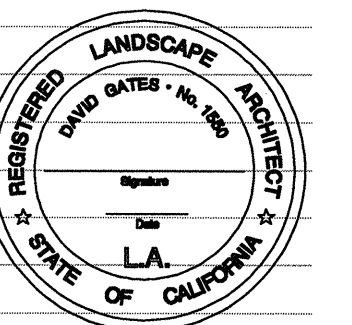
GATES & ASSOCIATES  
LANDSCAPE ARCHITECTURE  
LAND PLANNING URBAN DESIGN

2671 CROW CANYON RD, SAN RAMON, CA. 94583  
TEL: 925.736.8176 FAX: 925.838.8901  
WWW.DGATES.COM

HINDU  
COMMUNITY AND  
CULTURAL CENTER

LIVERMORE, CA

REVISION: DESCRIPTION: DATE:



PROJECT NAME: HCCD  
PROJECT NUMBER: P3876  
PROJECT FILE:  
DRAWN: AC  
CHECK: DG, JC  
DATE: 08/14/2009

SCALE: NTS

IRRIGATION DETAILS